

Hanford Mall

Hanford, California



DISCOVER MORE...

HANFORD MALL

Key Retailers

Kohl's Opening 2010
JCPenney
Sears
Forever 21
Cinemark Movies 8
Ross Dress for Less

Contact Information

Howard S. Wong, CLS
Director of Retail Leasing

Hanford Mall
1675 West Lacey Blvd.
Hanford, California 93230
tel 714.998.1521 ext 211
fax 714.998.6378
hwong@passco.net

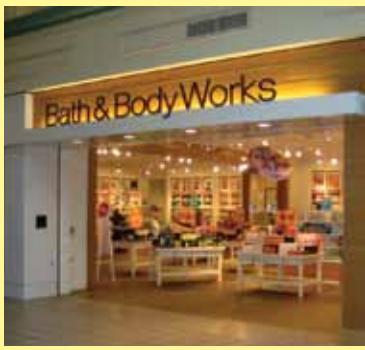
Monica Sozinho
Specialty Leasing

Hanford Mall
1675 West Lacey Blvd.
Hanford, California 93230
tel 559.583.1200
fax 559.583.1288
msozinho@passco.net

Hanford Mall at a Glance

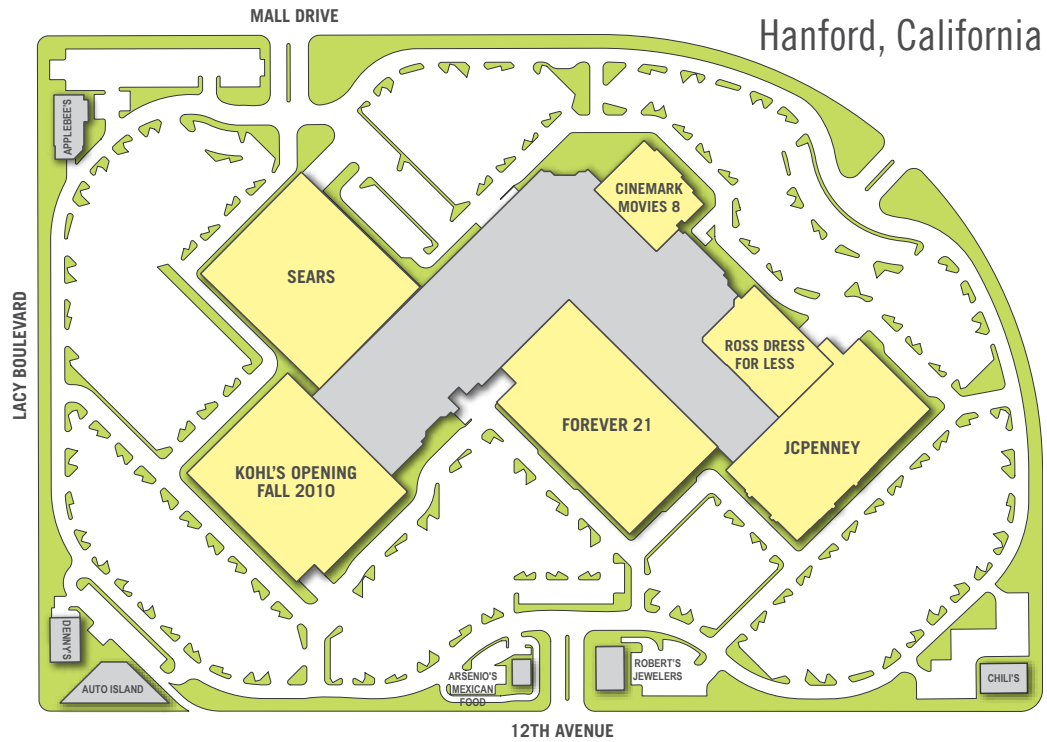
- Hanford is located in Kings County, an area that is projected to grow 10.42% over the next 5 years, a rate that exceeds the California average.
- The center is conveniently located off Highway 198 with over 32,000 cars passing by daily.
- Adjacent to a new big box development, this critical mass of shopping includes: Marshall's, Lowe's, PetSmart, Home Depot, Target, Old Navy and a Super Walmart that attracts customers from as far as 20 miles away.
- Hanford Mall is the only regional shopping center mall in Kings County.
- Lemoore Naval Air Station located 15 miles from the center is the fourth largest "city" in Kings County with a payroll of approximately \$161,000,000.
- An exciting new Kohl's department store is opening Fall 2010 and Forever 21 super store opened in July 2009.
- The Tachi Palace Hotel & Casino is located 12 miles from the center and is the only casino within a 50 miles radius.
- Hanford is part of the Kings County Enterprise Zone which allows new and existing businesses to be eligible for state tax credits and other benefits.
- A \$112 million hospital is slated to open August 2010 adjacent to the center.

www.hanfordmall.com



Site Plan

Hanford Mall Hanford, California



DISCOVER MORE...

HANFORD MALL

Statistics & Demographics

Property Data	
Opening Date	March 1993
Site	33.71 acres
Parking	2,179 spaces
Total Stores	70
Levels	1
Leasable Area	
Mall GLA	487,186 s.f.
Mall Shops	139,969 s.f.
Outparcels	24,288 s.f.
Anchors (Total)	322,929 s.f.
Kohl's Opening 2010	77,823 s.f.
Forever 21	79,930 s.f.
JCPenney	61,291 s.f.
Sears	75,852 s.f.
Ross Dress For Less	28,033 s.f.
Trade Area	
20-Mile Radius	
Population	293,876
Total Households	86,428
Avg. Household Income	\$64,834
Median Age	30.84 yrs.
Source: Claritas 2009.	

Location Map



HANFORD MALL

1675 West Lacey Blvd.
Hanford, California 93230

tel 559.583.1200

fax 559.583.1288

www.hanfordmall.com